

LANGHAM NEIGHBOURHOOD PLAN 2022-2041



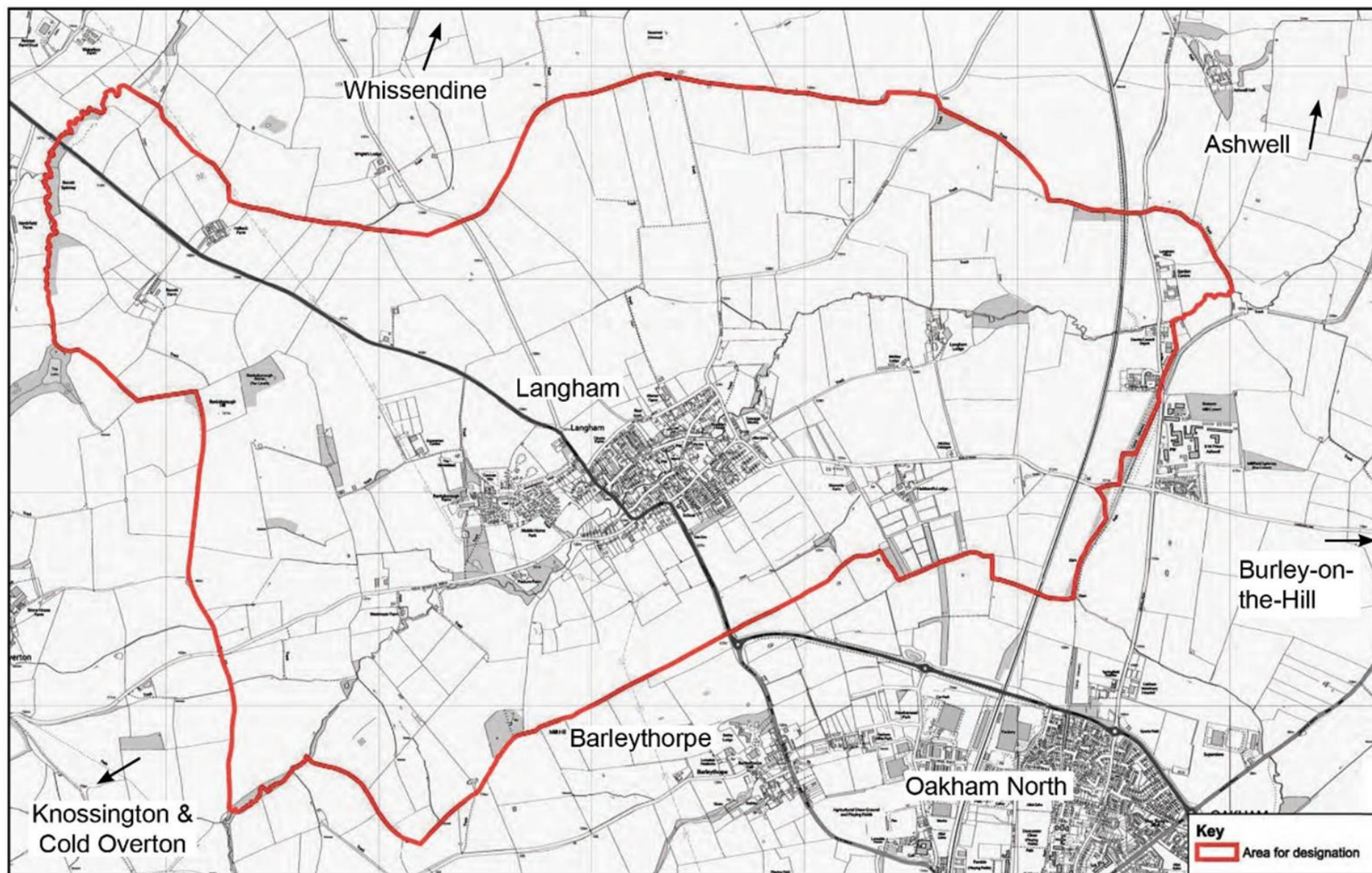
Support Document **SDL 11 Langham Maps**

January 2022

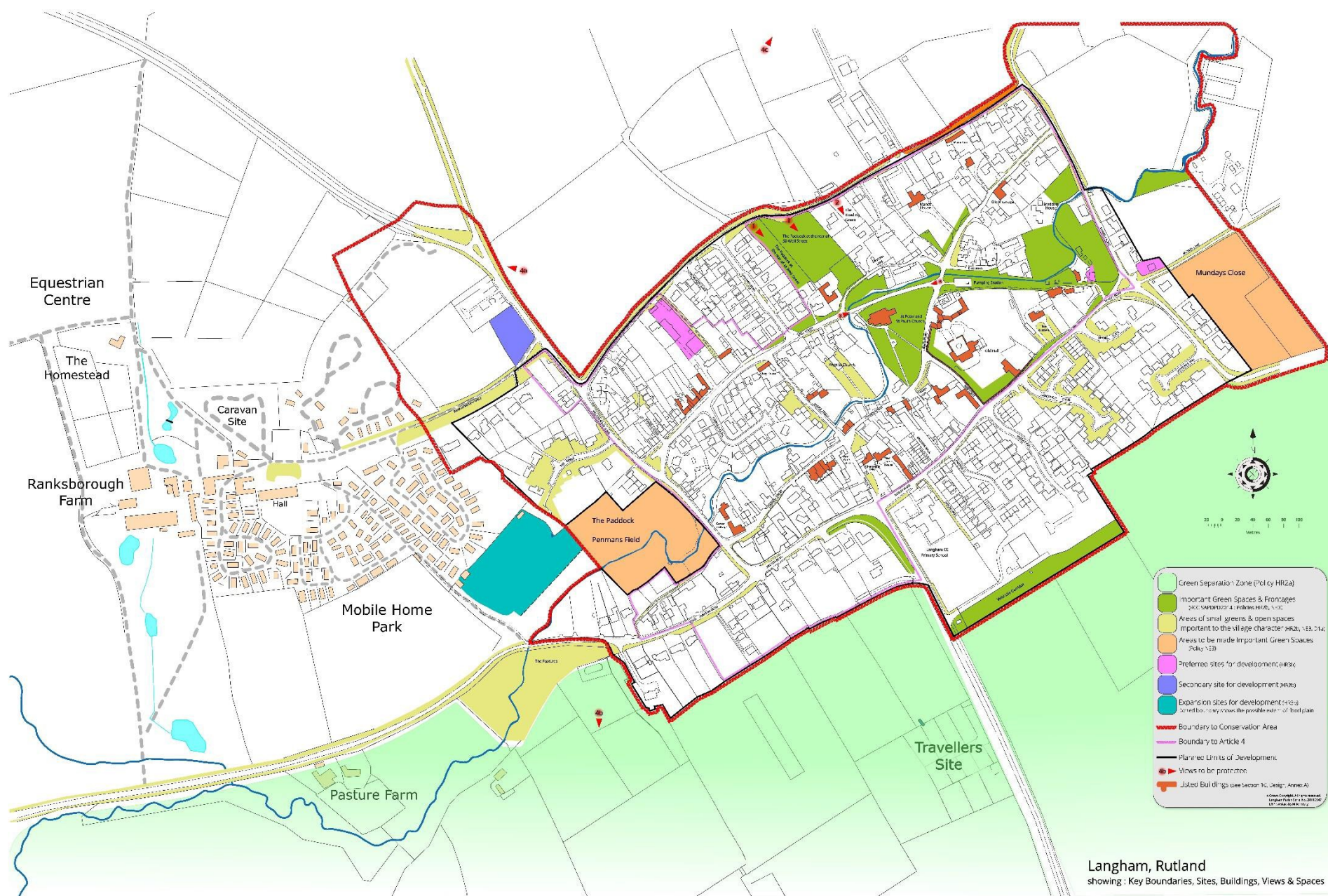
CONTENTS

Langham Parish	1
Langham Village	2
Conservation Area and Open Green Spaces & Frontages	3
Green Separation Zone	4
Rights of Way	5
Trees with Protection Orders	6
Flood Zones	7
Activities and Clubs	8
Streets and Junctions	9
Location of Preferred Sites	10
Detail of Preferred Sites	11

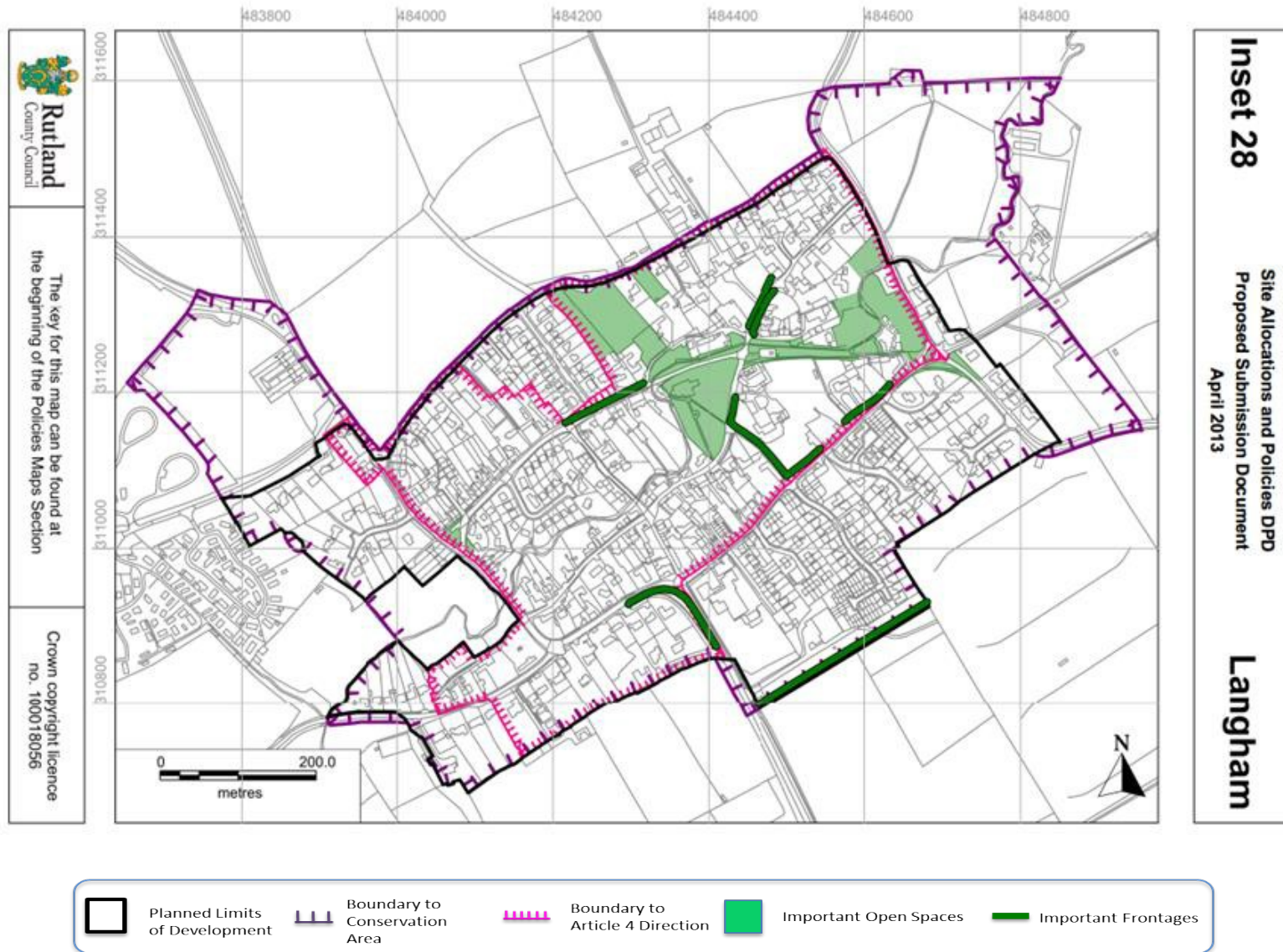
1. Langham Parish showing the area addressed via Langham Neighbourhood Plan 2016 - 2036



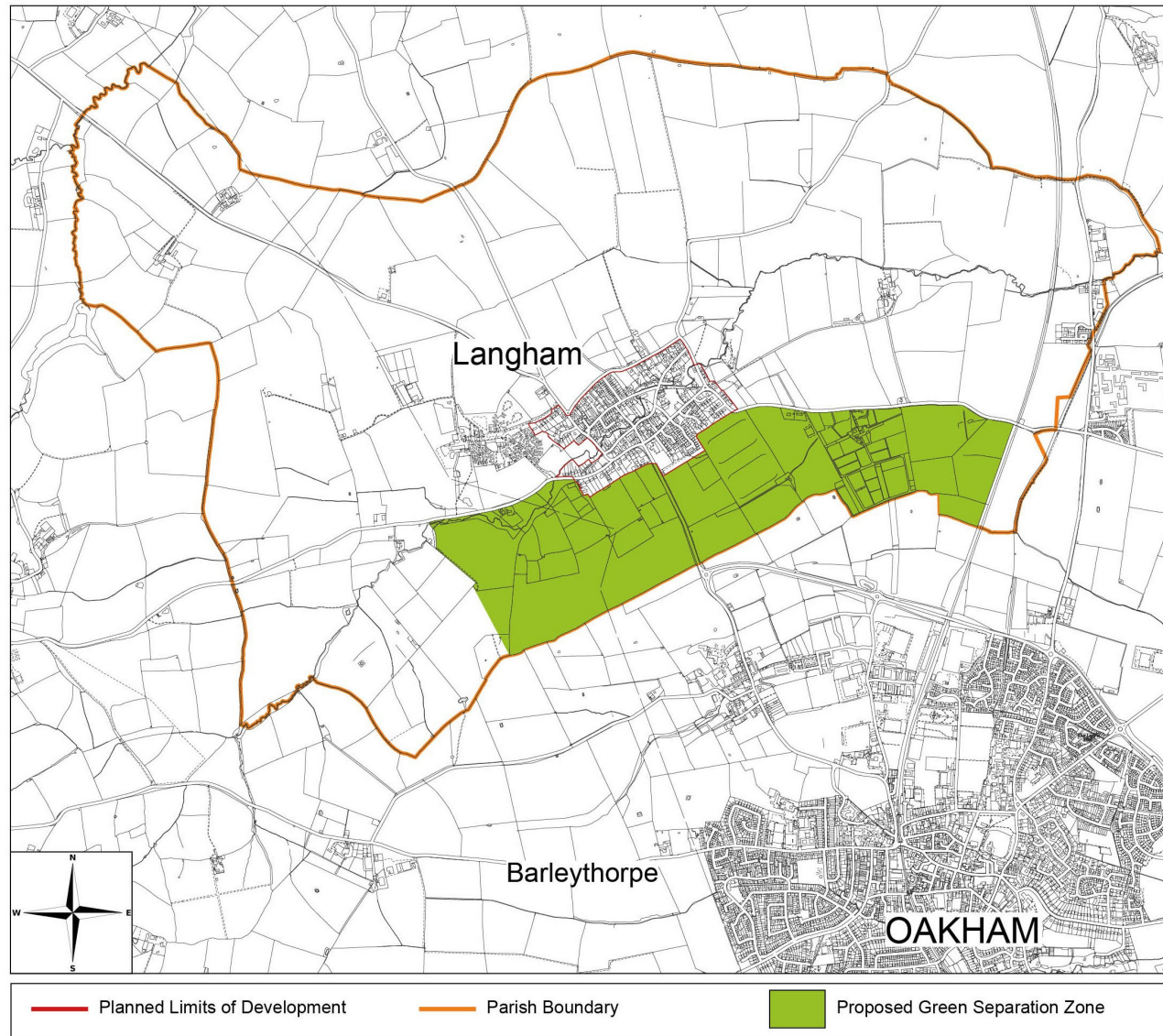
2: Map of Langham, Key Boundaries, Sites, Buildings, Spaces and Frontages



3. Conservation and Green Areas – RCC's SAPDPD 2014



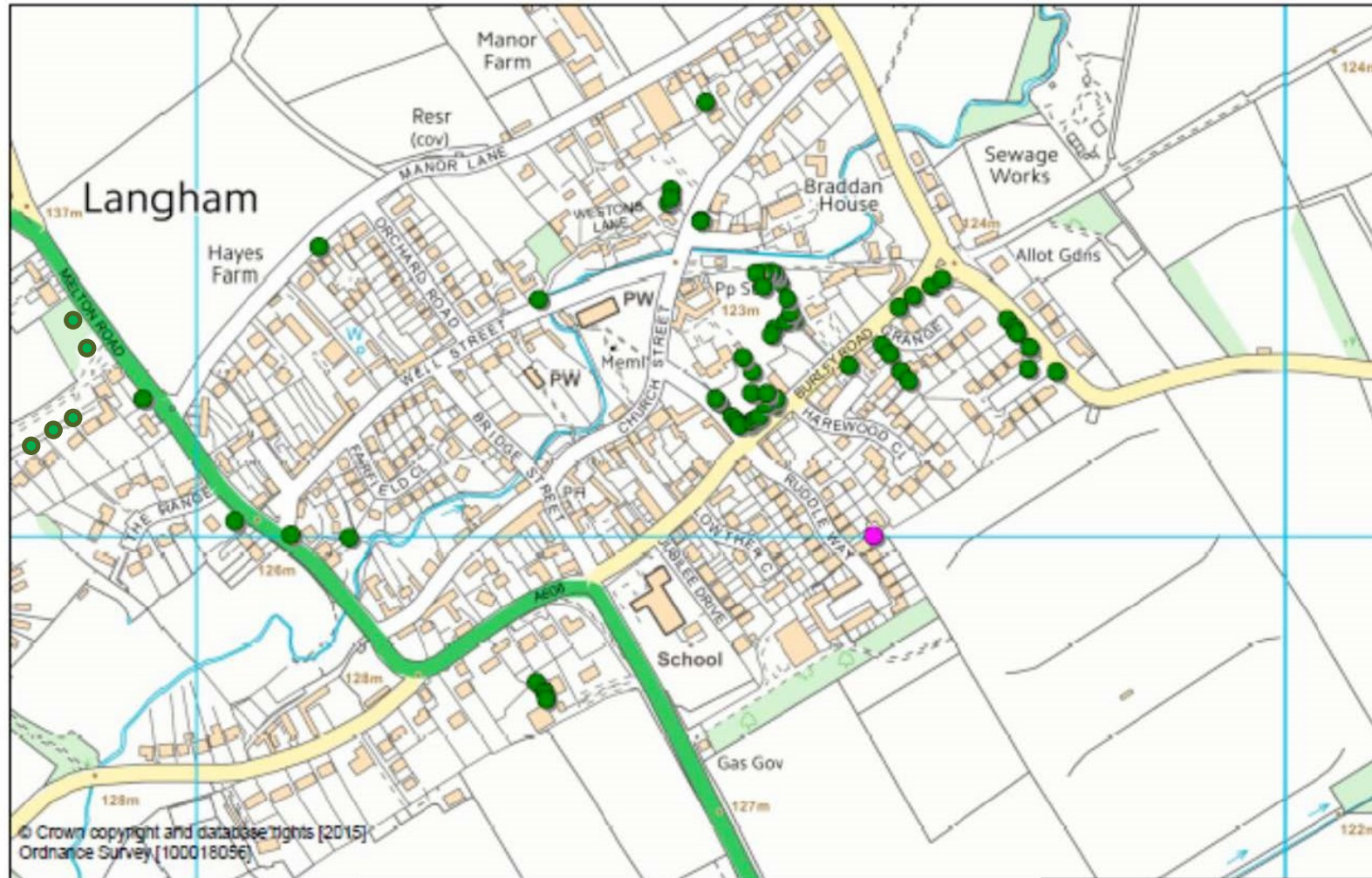
4. Green Separation Zone (GSZ)



5. Langham Public Rights of Way



6. Langham Tree Preservation Orders (TPOs)



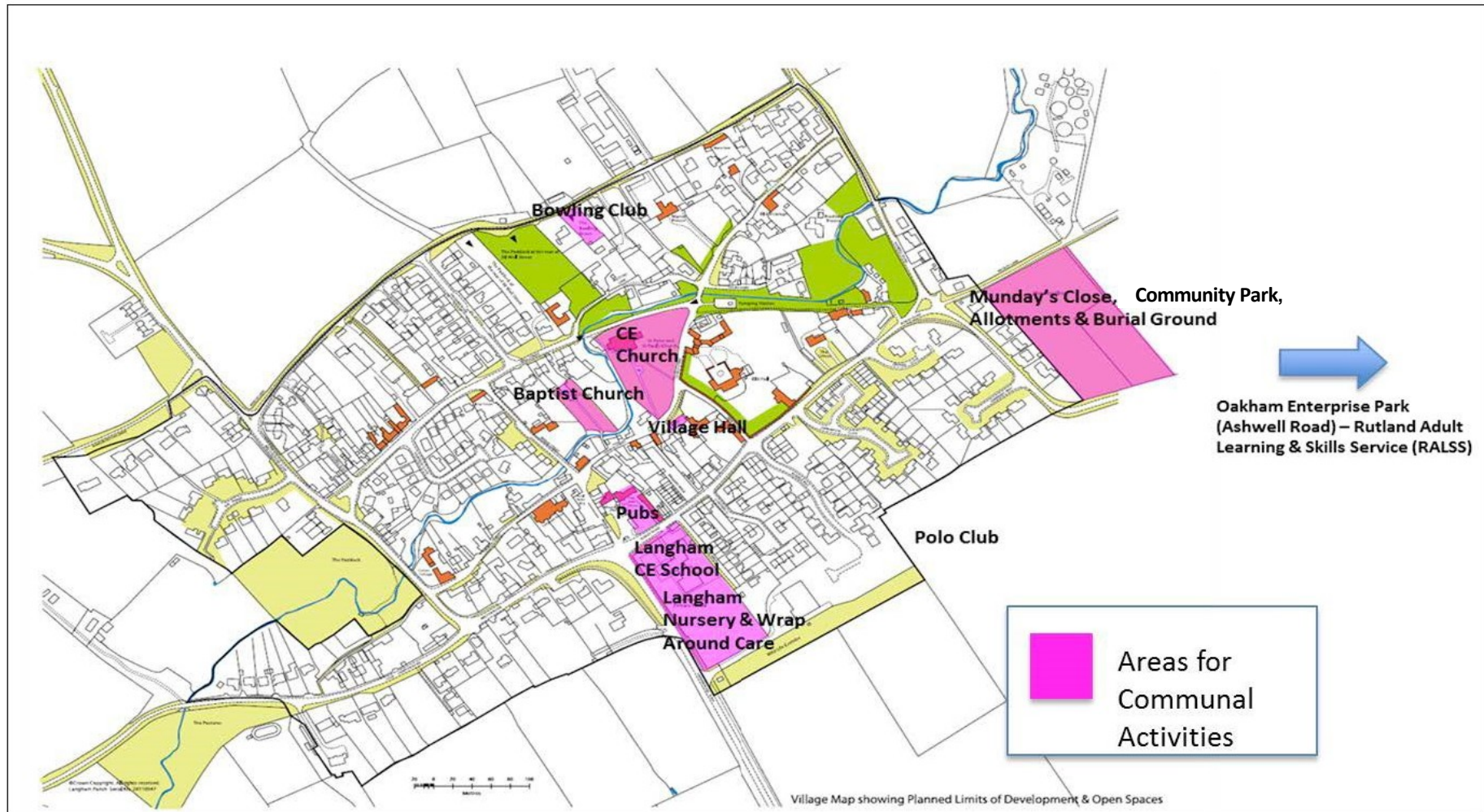
7. Flood Risk



This map is the latest available from the Environment Agency (EA), but is not up to date and the EA stresses the map should not be used as an accurate reference. It is required that a Sequential Flood Test be carried out on any intended development.

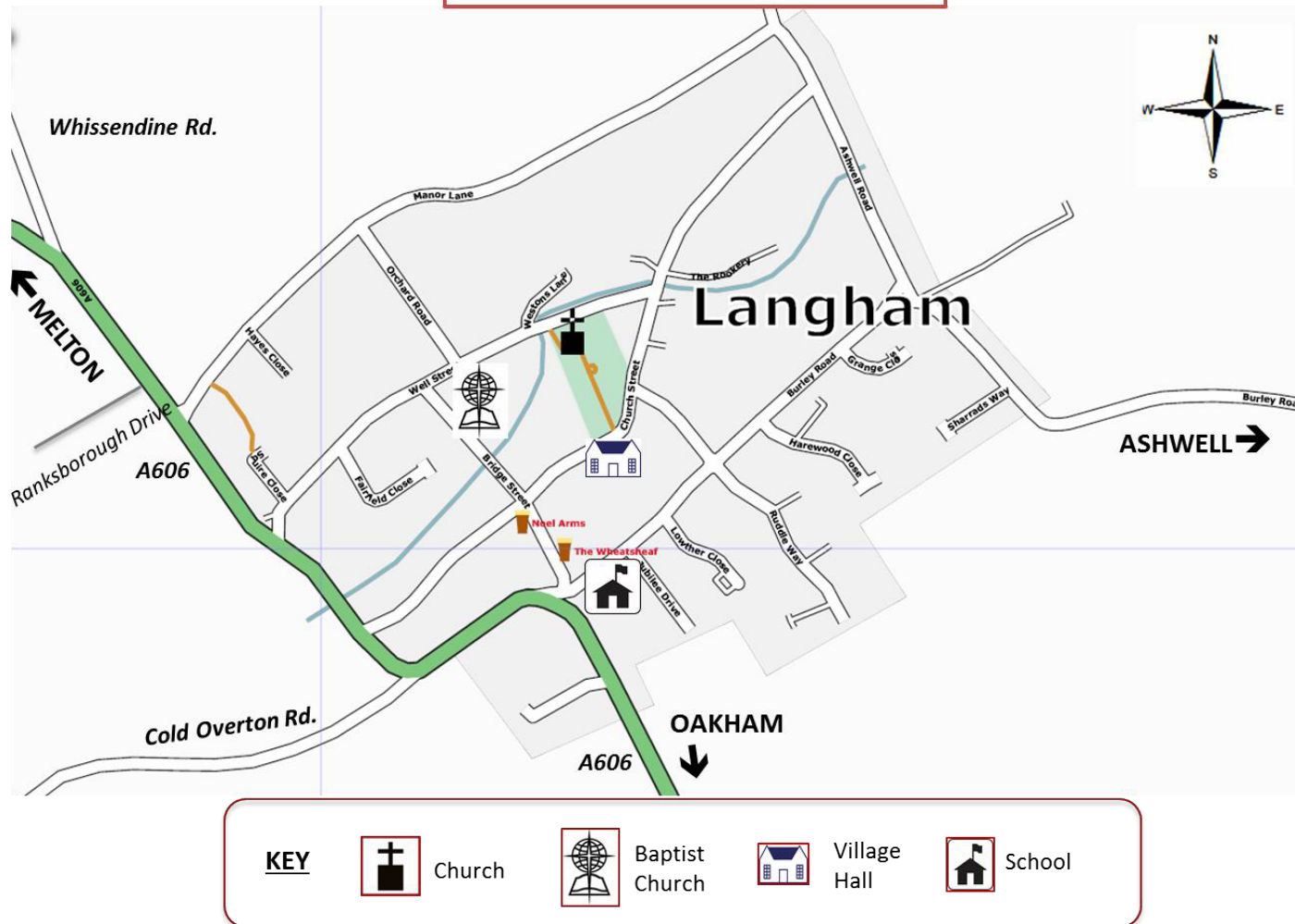
8. Langham Interests, Activities and Sport

Source: www.langhaminrutland.org/mapindex.htm

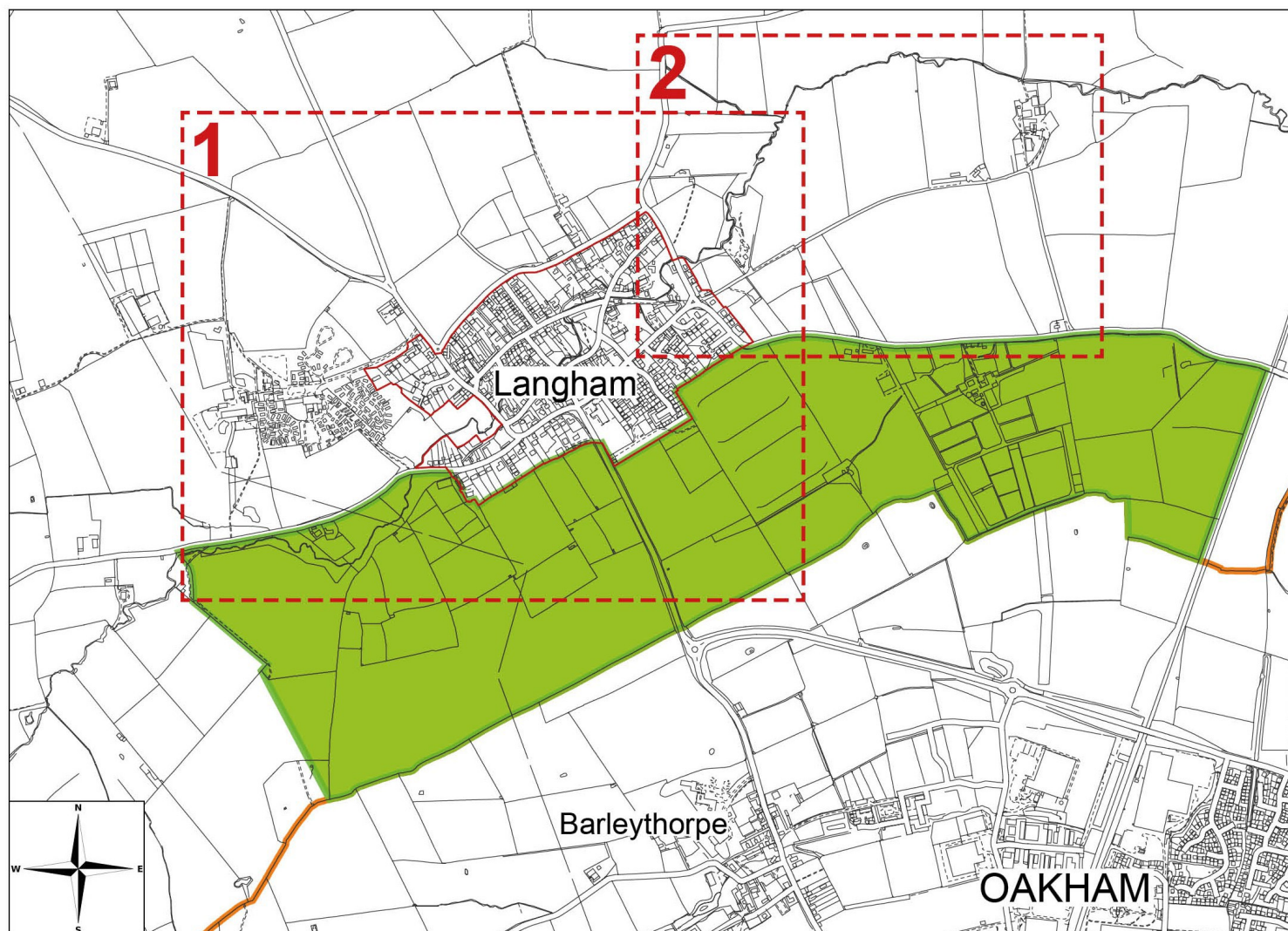


9. Streets of Langham

The village of Langham showing major roads, junctions and community buildings.



10a. Sites for Potential Development in Langham to 2036



10b. Sites for Potential Development in Langham to 2036

